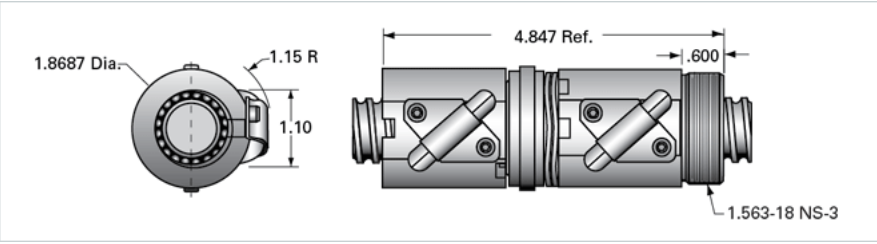


PowerTrac SEL 1000 - 0250 RH, Adjustable Preloaded

Call 800-321-7800 or visit us online at www.nookindustries.com to configure and order your PowerTrac SEL 1000 - 0250 RH, Adjustable Preloaded



Product Info	
Ball Nut Number	SEL10474
Thread Direction	RH
Details	
Ball Circle Diameter [in]	1.000
Lead [in]	0.250
Nominal Ball Diameter [in]	0.156
Root diameter [in]	0.820
Forces and Torques	
Torque to Raise 1 lb. [in-lb]	0.044
Flange Part Numbers	
Flange Part Number	FLG7571
Wiper Part Numbers	
Wiper Kit Part Number	WKB1050
Weight	
Nut Weight [lb]	1.90
Performance Specifications	
Lead Accuracy +/- [in./ft.]	0.004
Maximum Adjustable Preload [lb]	330
Spring Rate x 10 ⁶ [lb./in.]	
Dynamic Load [lb]	1612
Static Load [lb]	13913