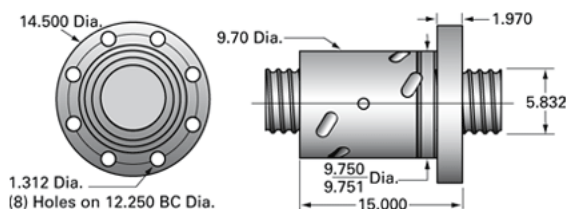
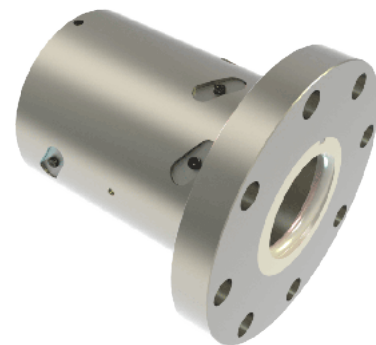


## PowerTrac SBN 6000 - 1000 RH, Internal Return, Flange

Call 800-321-7800 or visit us online at [www.nookindustries.com](http://www.nookindustries.com) to configure and order your PowerTrac SBN 6000 - 1000 RH, Internal Return, Flange



### Product Info

Ball Nut Number	SBN10442
Thread Direction	RH

### Details

Ball Circle Diameter [in]	6.000
Lead [in]	1.000
Nominal Ball Diameter [in]	1.514
Root diameter [in]	5.232

### Dimensions

A [in]

### Forces and Torques

Torque to Raise 1 lb. [in-lb]	0.177
-------------------------------	-------

### Flange Part Numbers

Flange Part Number	INTEGRAL
--------------------	----------

### Wiper Part Numbers

Wiper Kit Part Number	PLASTIC
Wiper Kit Felt Part Number	

### Weight

Nut Weight [lb]	225.00
-----------------	--------

### Performance Specifications

Lead Accuracy +/- [in./ft.]	0.002
Maximum Adjustable Preload [lb]	
Spring Rate x 10 <sup>6</sup> [lb./in.]	
Dynamic Load [lb]	115507
Static Load [lb]	443548