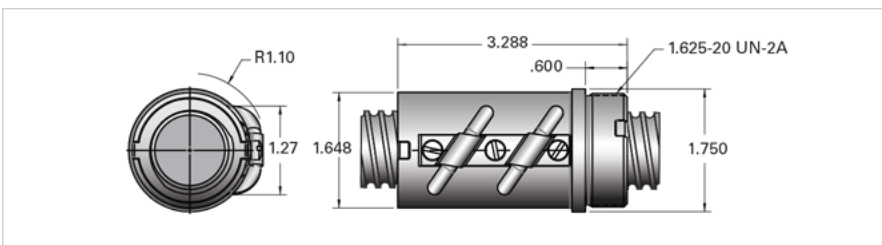


## PowerTrac SBN 1250 - 0200 RH, Double Circuit

Call 800-321-7800 or visit us online at [www.nookindustries.com](http://www.nookindustries.com) to configure and order your PowerTrac SBN 1250 - 0200 RH, Double Circuit today!



### Product Info

Ball Nut Number	SBN10627
Thread Direction	RH

### Details

Ball Circle Diameter [in]	1.250
Lead [in]	0.200
Nominal Ball Diameter [in]	0.125
Root diameter [in]	1.115

### Dimensions

A [in]

### Forces and Torques

Torque to Raise 1 lb. [in-lb]	0.035
-------------------------------	-------

### Flange Part Numbers

Flange Part Number	FLG8283
--------------------	---------

### Wiper Part Numbers

Wiper Kit Part Number	ELASTOMER
Wiper Kit Felt Part Number	

### Weight

Nut Weight [lb]	1.80
-----------------	------

### Performance Specifications

Lead Accuracy +/- [in./ft.]	0.004
Maximum Adjustable Preload [lb]	
Spring Rate x 10 <sup>6</sup> [lb./in.]	
Dynamic Load [lb]	3336
Static Load [lb]	34688