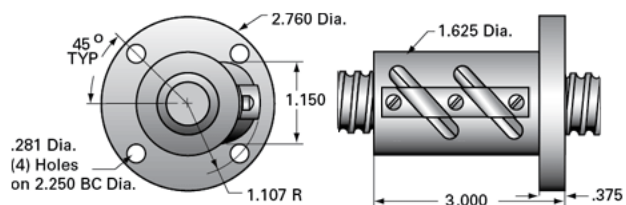


PowerTrac SBN 1000 - 0250 LH Integral Flange

Call 800-321-7800 or visit us online at www.nookindustries.com to configure and order your PowerTrac SBN 1000 - 0250 LH Integral Flange today!



Product Info

Ball Nut Number	SBN8284
Thread Direction	LH

Details

Ball Circle Diameter [in]	1.000
Lead [in]	0.250
Nominal Ball Diameter [in]	0.156
Root diameter [in]	0.820

Dimensions

A [in]

Forces and Torques

Torque to Raise 1 lb. [in-lb]	0.044
-------------------------------	-------

Flange Part Numbers

Flange Part Number	INTEGRAL
--------------------	----------

Wiper Part Numbers

Wiper Kit Part Number	WKB2651
Wiper Kit Felt Part Number	

Weight

Nut Weight [lb]	1.50
-----------------	------

Performance Specifications

Lead Accuracy +/- [in./ft.]	0.004
Maximum Adjustable Preload [lb]	
Spring Rate x 10 ⁶ [lb./in.]	
Dynamic Load [lb]	3224
Static Load [lb]	27826