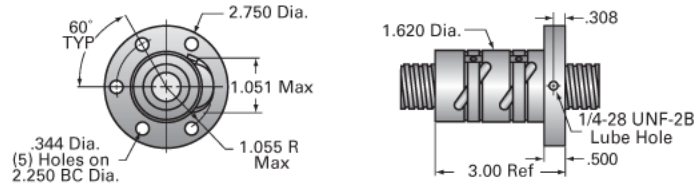
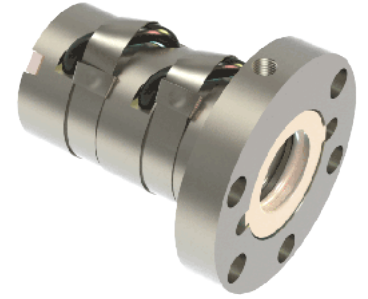


## PowerTrac SSN 1000 - 0200 RH, Preloaded, Integral Flange

Call 800-321-7800 or visit us online at [www.nookindustries.com](http://www.nookindustries.com) to configure and order your PowerTrac SSN 1000 - 0200 RH, Preloaded, Integral Flange



### Product Info

Ball Nut Number	SSN0391
Thread Direction	RH

### Details

Ball Circle Diameter [in]	1.000
Lead [in]	0.200
Nominal Ball Diameter [in]	0.125
Root diameter [in]	0.865

### Forces and Torques

Torque to Raise 1 lb. [in-lb]	0.035
-------------------------------	-------

### Flange Part Numbers

Flange Part Number	INTEGRAL
--------------------	----------

### Wiper Part Numbers

Wiper Kit Part Number	ELASTOMER
-----------------------	-----------

### Weight

Nut Weight [lb]	1.50
-----------------	------

### Performance Specifications

Maximum Adjustable Preload [lb]	
Spring Rate x 10 <sup>6</sup> [lb./in.]	3.50
Dynamic Load [lb]	1565
Static Load [lb]	13073