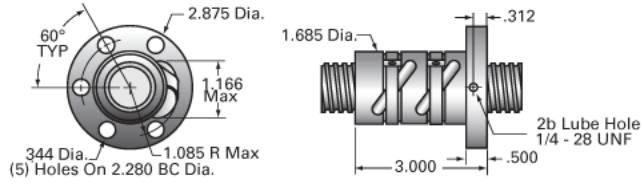
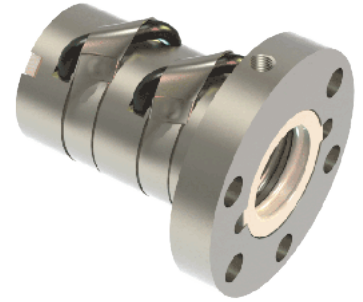


PowerTrac SSN 1150 - 0200 RH, Preloaded, Integral Flange

Call 800-321-7800 or visit us online at www.nookindustries.com to configure and order your PowerTrac SSN 1150 - 0200 RH, Preloaded, Integral Flange



Product Info

Ball Nut Number	SSN0392
Thread Direction	RH

Details

Ball Circle Diameter [in]	1.150
Lead [in]	0.200
Nominal Ball Diameter [in]	0.125
Root diameter [in]	1.015

Forces and Torques

Torque to Raise 1 lb. [in-lb]	0.035
-------------------------------	-------

Flange Part Numbers

Flange Part Number	INTEGRAL
--------------------	----------

Wiper Part Numbers

Wiper Kit Part Number	ELASTOMER
-----------------------	-----------

Weight

Nut Weight [lb]	2.00
-----------------	------

Performance Specifications

Maximum Adjustable Preload [lb]	
Spring Rate x 10 ⁶ [lb./in.]	4.25
Dynamic Load [lb]	1680
Static Load [lb]	14886