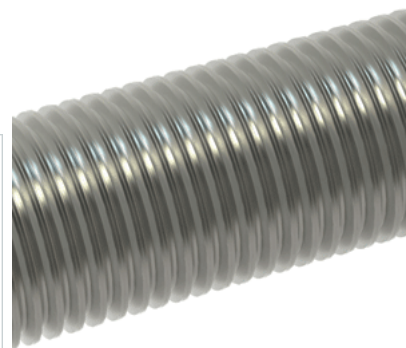


## PowerAC 1"-10 RS

Call 800-321-7800 or visit us online at [www.nookindustries.com](http://www.nookindustries.com) to configure and order your PowerAC 1"-10 RS today!



| Product Info  |                      |
|---|----------------------|
| Screw Code  | 110-RS               |
| Thread Direction  | RH                   |
| Screw Material  | 300 Series Stainless |
| Details   |                      |
| Lead [in]   | 0.100                |
| Starts  | 1                    |
| Pitch [in]  | 0.100                |
| Turns Per Inch  | 10                   |
| Threads per Inch  | 10                   |
| Thread Code   | 110                  |
| Form  | 2C                   |
| End Code for Types 1,2,3,5 [* Journals may show tracings of the thread] | 20                   |
| End Code for Type 4 [* Journals may show tracings of the thread]        | 12                   |
| Dimensions  |                      |
| A - Root Diameter Minimum [in]  | 0.857                |
| D - Nominal Rod Diameter [in]   | 1.000                |
| Part Numbers  |                      |
| 3 ft. Part Number   | 91110                |
| 6 ft. Part Number   | 92110                |
| 12 ft. Part Number  | 93110                |
| 20 ft. Part Number  |                      |
| Performance Specifications  |                      |
| Lead Accuracy +/- [in/in]   | 0.0003               |
| Weight  |                      |
| Screw Weight [lb./ft.]  | 2.10                 |