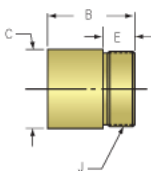
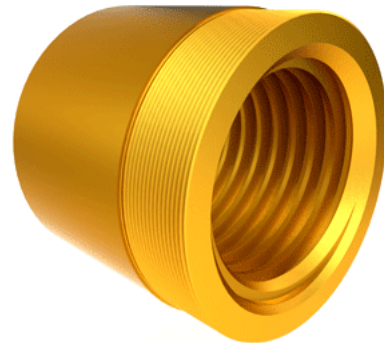


## Bronze Acme Nut 6"-1 1/2 RH

Call 800-321-7800 or visit us online at [www.nookindustries.com](http://www.nookindustries.com) to configure and order your Bronze Acme Nut 6"-1 1/2 RH today!



Product Info	
Part Number	20602
Thread Direction	RH
Type	Bronze
Details	
Lead [in]	0.667
Starts	1
Pitch [in]	0.667
Turns Per Inch	1.5
Lash (Maximum Axial) [in]	0.025
Nominal Rod Diameter [in]	6.000
Threads per Inch	1.5
Thread Code	602
Form	2G
Dimensions	
B [in]	7.00
C [in]	8.00
E [in]	2.00
J [in]	7.847-8
Forces and Torques	
Torque to Raise 1 lb. [in-lb]	0.474
Flange Part Numbers	
Flange No-Lash Part Number	n/a
Flange Part Number	n/a
Weight	
Flange Weight [lb]	n/a
Nut Weight [lb]	52.50
Performance Specifications	
Efficiency [%]	22
Lead Accuracy +/- [in/in]	0.0006
Dynamic Load Capacity [lb]	180000
Static Load Capacity [lb]	576000