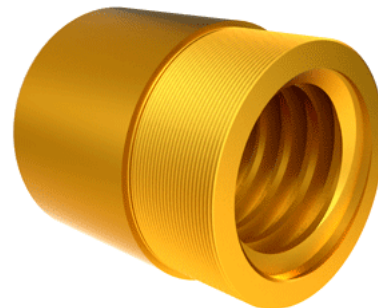


Bronze Acme Nut 3 3/4"-1 1/2 RH

Call 800-321-7800 or visit us online at www.nookindustries.com to configure and order your Bronze Acme Nut 3 3/4"-1 1/2 RH today!



Product Info

Part Number	20372
Thread Direction	RH
Type	Bronze

Details

Lead [in]	0.667
Starts	1
Pitch [in]	0.667
Turns Per Inch	1.5
Lash (Maximum Axial) [in]	0.020
Nominal Rod Diameter [in]	3.750
Threads per Inch	1.5
Thread Code	372
Form	2G

Dimensions

B [in]	5.50
C [in]	5.00
E [in]	2.00
F (n) Dia. [in]	(4) 1.06
F BCD [in]	7.000
G [in]	2.02
H [in]	9.00
J [in]	4.750-12

Forces and Torques

Torque to Raise 1 lb. [in-lb]	0.345
-------------------------------	-------

Flange Part Numbers

Flange No-Lash Part Number	73372
Flange Part Number	70775

Weight

Flange Weight [lb]	23.82
Nut Weight [lb]	16.89

Performance Specifications

Efficiency [%]	30
Lead Accuracy +/- [in/in]	0.0006
Dynamic Load Capacity [lb]	81000
Static Load Capacity [lb]	260000