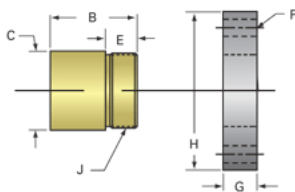
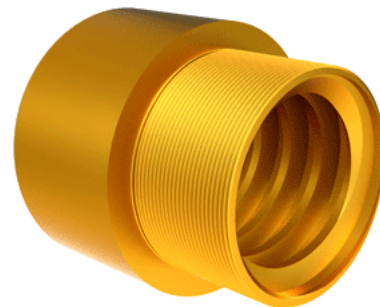


## Bronze Acme Nut 3 3/8 1 1/2 RH

Call 800-321-7800 or visit us online at [www.nookindustries.com](http://www.nookindustries.com) to configure and order your Bronze Acme Nut 3 3/8 1 1/2 RH today!



### Product Info

Part Number	20332
Thread Direction	RH
Type	Bronze

### Details

Lead [in]	0.667
Starts	1
Pitch [in]	0.667
Turns Per Inch	1.5
Lash (Maximum Axial) [in]	0.020
Nominal Rod Diameter [in]	3.375
Threads per Inch	1.5
Thread Code	332
Form	2G

### Dimensions

B [in]	4.50
C [in]	4.50
E [in]	2.00
F (n) Dia. [in]	(6) .781
F BCD [in]	6.250
G [in]	2.02
H [in]	7.38
J [in]	3.625-12

### Forces and Torques

Torque to Raise 1 lb. [in-lb]	0.312
-------------------------------	-------

### Flange Part Numbers

Flange No-Lash Part Number	73332
Flange Part Number	70740

### Weight

Flange Weight [lb]	23.82
Nut Weight [lb]	11.62

### Performance Specifications

Efficiency [%]	34
Lead Accuracy +/- [in/in]	0.0006
Dynamic Load Capacity [lb]	60000
Static Load Capacity [lb]	192000