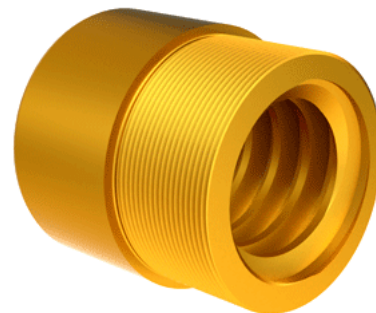


## Bronze Acme Nut 2 1/2"-2 RH

Call 800-321-7800 or visit us online at [www.nookindustries.com](http://www.nookindustries.com) to configure and order your Bronze Acme Nut 2 1/2"-2 RH today!



### Product Info

Part Number	20252
Thread Direction	RH
Type	Bronze

### Details

Lead [in]	0.500
Starts	1
Pitch [in]	0.500
Turns Per Inch	2
Lash (Maximum Axial) [in]	0.012
Nominal Rod Diameter [in]	2.500
Threads per Inch	2
Thread Code	252
Form	40

### Dimensions

B [in]	3.38
C [in]	3.38
E [in]	1.56
F (n) Dia. [in]	(6) .656
F BCD [in]	4.380
G [in]	1.58
H [in]	5.38
J [in]	3.137-12

### Forces and Torques

Torque to Raise 1 lb. [in-lb]	0.234
-------------------------------	-------

### Flange Part Numbers

Flange No-Lash Part Number	73540
Flange Part Number	FLG7574

### Weight

Flange Weight [lb]	9.88
Nut Weight [lb]	5.00

### Performance Specifications

Efficiency [%]	34
Lead Accuracy +/- [in/in]	0.0003
Dynamic Load Capacity [lb]	31250
Static Load Capacity [lb]	100000