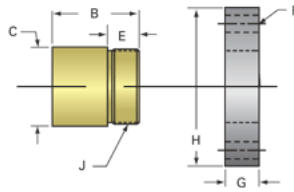
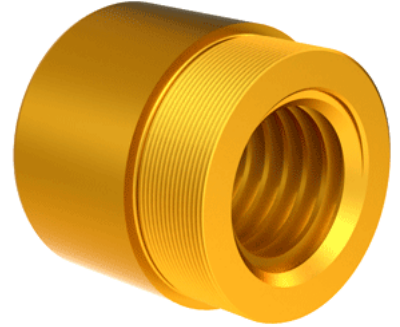


## Bronze Acme Nut 1 3/4"-4 LH

Call 800-321-7800 or visit us online at [www.nookindustries.com](http://www.nookindustries.com) to configure and order your Bronze Acme Nut 1 3/4"-4 LH today!



Product Info	
Part Number	80174
Thread Direction	LH
Type	Bronze
Details	
Lead [in]	0.250
Starts	1
Pitch [in]	0.250
Turns Per Inch	4
Lash (Maximum Axial) [in]	0.011
Nominal Rod Diameter [in]	1.750
Threads per Inch	4
Thread Code	174
Form	2C
Dimensions	
B [in]	2.50
C [in]	2.75
E [in]	0.88
F (n) Dia. [in]	(4) .531
F BCD [in]	4.062
G [in]	0.90
H [in]	4.94
J [in]	2.548-18
Forces and Torques	
Torque to Raise 1 lb. [in-lb]	0.153
Flange Part Numbers	
Flange No-Lash Part Number	73500
Flange Part Number	FLG7573
Weight	
Flange Weight [lb]	4.73
Nut Weight [lb]	3.05
Performance Specifications	
Efficiency [%]	26
Lead Accuracy +/- [in/in]	0.0003
Dynamic Load Capacity [lb]	15312
Static Load Capacity [lb]	49900