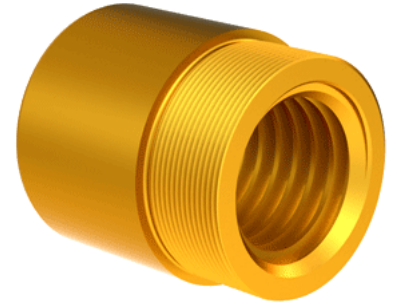


## Bronze Acme Nut 1 1/2"-5 LH

Call 800-321-7800 or visit us online at [www.nookindustries.com](http://www.nookindustries.com) to configure and order your Bronze Acme Nut 1 1/2"-5 LH today!



Product Info	
Part Number	80155
Thread Direction	LH
Type	Bronze
Details	
Lead [in]	0.200
Starts	1
Pitch [in]	0.200
Turns Per Inch	5
Lash (Maximum Axial) [in]	0.010
Nominal Rod Diameter [in]	1.500
Threads per Inch	5
Thread Code	155
Form	2C
Dimensions	
B [in]	2.30
C [in]	2.13
E [in]	0.81
F (n) Dia. [in]	(4) .397
F BCD [in]	3.440
G [in]	0.83
H [in]	4.20
J [in]	1.967-18
Forces and Torques	
Torque to Raise 1 lb. [in-lb]	0.127
Flange Part Numbers	
Flange No-Lash Part Number	73420
Flange Part Number	FLG7572
Weight	
Flange Weight [lb]	3.19
Nut Weight [lb]	1.35
Performance Specifications	
Efficiency [%]	25
Lead Accuracy +/- [in/in]	0.0003
Dynamic Load Capacity [lb]	11250
Static Load Capacity [lb]	36000