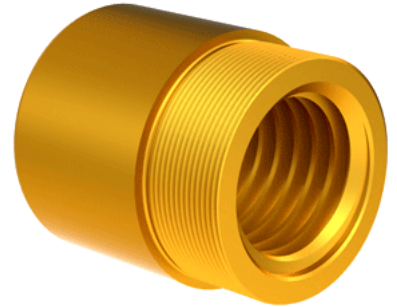
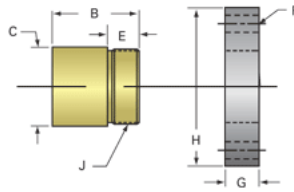


## Bronze Acme Nut 1 1/2"-5 RH

Call 800-321-7800 or visit us online at [www.nookindustries.com](http://www.nookindustries.com) to configure and order your Bronze Acme Nut 1 1/2"-5 RH today!



### Product Info

Part Number	20155
Thread Direction	RH
Type	Bronze

### Details

Lead [in]	0.200
Starts	1
Pitch [in]	0.200
Turns Per Inch	5
Lash (Maximum Axial) [in]	0.010
Nominal Rod Diameter [in]	1.500
Threads per Inch	5
Thread Code	155
Form	2C

### Dimensions

B [in]	2.30
C [in]	2.13
E [in]	0.81
F (n) Dia. [in]	(4) .397
F BCD [in]	3.440
G [in]	0.83
H [in]	4.20
J [in]	1.967-18

### Forces and Torques

Torque to Raise 1 lb. [in-lb]	0.127
-------------------------------	-------

### Flange Part Numbers

Flange No-Lash Part Number	73420
Flange Part Number	FLG7572

### Weight

Flange Weight [lb]	3.19
Nut Weight [lb]	1.35

### Performance Specifications

Efficiency [%]	25
Lead Accuracy +/- [in/in]	0.0003
Dynamic Load Capacity [lb]	11250
Static Load Capacity [lb]	36000