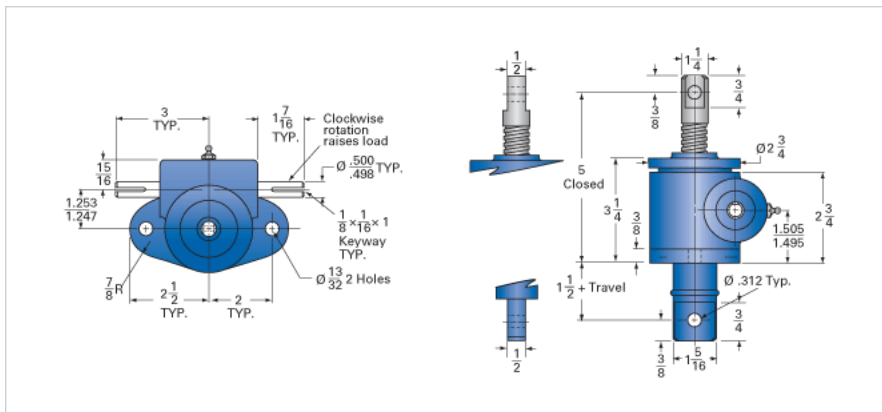


## ActionJac 1-MSJ-DC 20:1

Call 800-321-7800 or visit us online at [www.nookindustries.com](http://www.nookindustries.com) to configure and order your ActionJac 1-MSJ-DC 20:1 today!



### Details

|                                     |        |
|-------------------------------------|--------|
| Capacity [Ton]                      | 1      |
| Gear Ratio                          | 20:1   |
| Turns of Worm per Inch Travel       | 100    |
| Torque to Raise 1 lb. [in-lb]       | 0.0105 |
| Torque to Raise 1 lb. Keyed [in-lb] | 0.0121 |
| Lifting Screw Diameter [in]         | 0.75   |
| Screw Lead [in]                     | 0.200  |
| Root Diameter [in]                  | 0.502  |
| Tare Drag Torque [in-lb]            | 3      |

### Performance Specifications

|  |                    |
|--|--------------------|
| Maximum Allowable Input [hp]                     | 0.25               |
| Maximum Input Torque [in-lb]                     | 21                 |
| Maximum Worm Speed at Rated Load Non-keyed [rpm] | 750                |
| Maximum Worm Speed at Rated Load Keyed [rpm]     | 651                |
| Maximum Load at 1750 RPM Non-keyed [lb]          | 857                |
| Maximum Load at 1750 RPM Keyed [lb]              | 744                |
| Starting Torque                                  | 2 x Running Torque |

### Weight

|                         |      |
|-------------------------|------|
| Base 0 Travel [lb]      | 5.5  |
| Per Inch of Travel [lb] | 0.30 |
| Grease [lb]             | 0.5  |