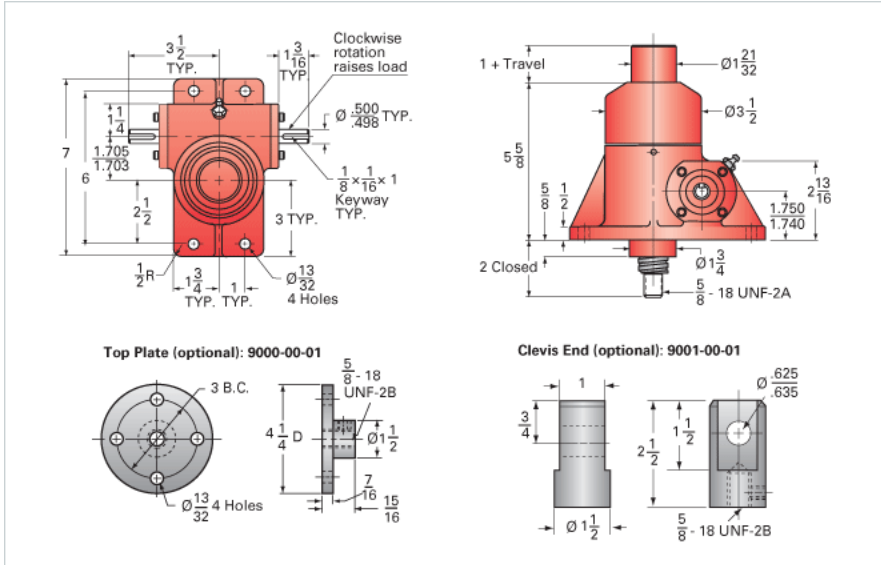


## ActionJac 2R-BSJ-I 12:1

Call 800-321-7800 or visit us online at [www.nookindustries.com](http://www.nookindustries.com) to configure and order your ActionJac 2R-BSJ-I 12:1 today!



### Details

|                                     |        |
|-------------------------------------|--------|
| Capacity [Ton]                      | 2      |
| Gear Ratio                          | 12:1   |
| Lifting Screw Diameter [in]         | 1.00   |
| Screw Lead [in]                     | 0.250  |
| Root Diameter [in]                  | 0.820  |
| Turns of Worm per Inch Travel       | 48     |
| Torque to Raise 1 lb. Keyed [in-lb] | 0.0070 |
| Torque to Raise 1 lb. [in-lb]       | 0.0064 |
| BackDrive Holding Torque [ft-lb]    | 1.5    |

### Performance Specifications

|  |                      |
|--|----------------------|
| Maximum Allowable Input [hp]           | 1.50                 |
| Maximum Input Torque [in-lb]           | 26                   |
| Maximum Worm Speed at Rated Load [rpm] | 1800                 |
| Maximum Load at 1750 RPM [lb]          | 4000                 |
| Tare Drag Torque [in-lb]               | 4                    |
| Starting Torque                        | 1.5 x Running Torque |

### Weight

|                         |      |
|-------------------------|------|
| Base 0 Travel [lb]      | 18   |
| Per Inch of Travel [lb] | 0.60 |
| Grease [lb]             | 0.5  |