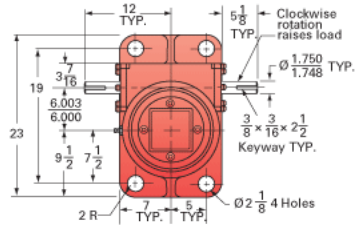
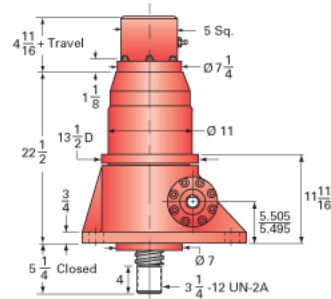
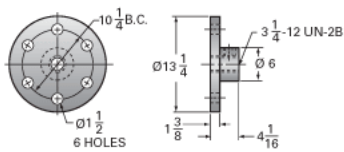


## ActionJac 75-BSJ-IK 32:1

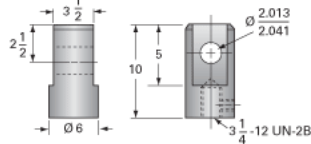
Call 800-321-7800 or visit us online at [www.nookindustries.com](http://www.nookindustries.com) to configure and order your ActionJac 75-BSJ-IK 32:1 today!



Top Plate (optional): 9000-00-18



Clevis End (optional): 9001-00-18



### Details

Capacity [Ton]	75
Gear Ratio	32:1
Turns of Worm per Inch Travel	32
Torque to Raise 1 lb. [in-lb]	0.0123
Lifting Screw Diameter [in]	4.00
Screw Lead [in]	1.000
Root Diameter [in]	3.338
BackDrive Holding Torque [ft-lb]	25.0
Tare Drag Torque [in-lb]	155

### Performance Specifications

Maximum Allowable Input [hp]	9.00
Maximum Input Torque [in-lb]	1680
Maximum Worm Speed at Rated Load [rpm]	307
Maximum Load at 1750 RPM [lb]	26352
Starting Torque	1.5 x Running Torque

### Weight

Base 0 Travel [lb]	650
Per Inch of Travel [lb]	5.00
Grease [lb]	9.0