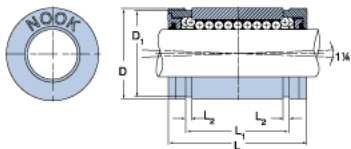
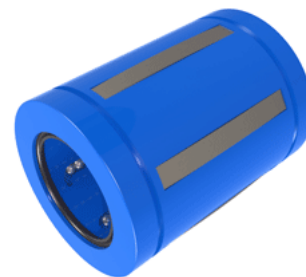


## EXCEL XLEC32UU

Call 800-321-7800 or visit us online at [www.nookindustries.com](http://www.nookindustries.com) to configure and order your EXCEL XLEC32UU today!



### Product Info

Nominal Shaft Diameter [in]	2
Part Number	XLEC32UU

### Dimensions

D1 [in]	2.8379
L Maximum [in]	3.960
L Minimum [in]	4.000
L1 Maximum [in]	3.163
L1 Minimum [in]	3.193
L2 [in]	0.105
Housing Bore Diameter D Maximum [in]	3.0010
Housing Bore Diameter D Minimum [in]	3.0000

### Performance Specifications

Number of Ball Circuits	6
Dynamic Load Maximum [lb]	2230
Dynamic Load Normal [lb]	2104
Static Load Maximum [lb]	1866
Static Load Normal [lb]	1458