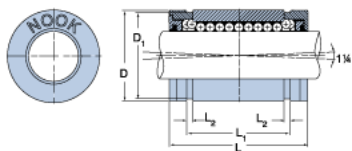
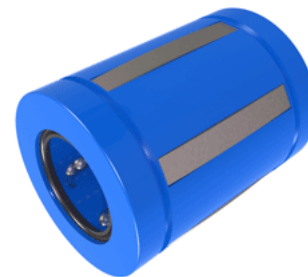


## EXCEL XLEC20UU

Call 800-321-7800 or visit us online at [www.nookindustries.com](http://www.nookindustries.com) to configure and order your EXCEL XLEC20UU today!



### Product Info

Nominal Shaft Diameter [in]	1 <sup>1</sup> / <sub>4</sub>
Part Number	XLEC20UU

### Dimensions

D1 [in]	1.8890
L Maximum [in]	2.600
L Minimum [in]	2.625
L1 Maximum [in]	1.984
L1 Minimum [in]	2.004
L2 [in]	0.086
Housing Bore Diameter D Maximum [in]	2.0008
Housing Bore Diameter D Minimum [in]	2.0000

### Performance Specifications

Number of Ball Circuits	6
Dynamic Load Maximum [lb]	1078
Dynamic Load Normal [lb]	1017
Static Load Maximum [lb]	911
Static Load Normal [lb]	712