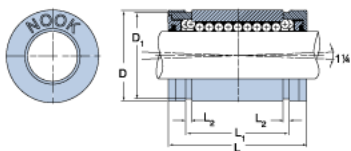
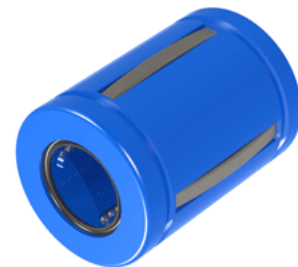


## EXCEL XLEC06UU

Call 800-321-7800 or visit us online at [www.nookindustries.com](http://www.nookindustries.com) to configure and order your EXCEL XLEC06UU today!



### Product Info

Nominal Shaft Diameter [in]	$\frac{3}{8}$
Part Number	XLEC06UU

### Dimensions

D1 [in]	0.5880
L Maximum [in]	0.860
L Minimum [in]	0.875
L1 Maximum [in]	0.689
L1 Minimum [in]	0.699
L2 [in]	0.039
Housing Bore Diameter D Maximum [in]	0.6255
Housing Bore Diameter D Minimum [in]	0.6250

### Performance Specifications

Number of Ball Circuits	4
Dynamic Load Maximum [lb]	68
Dynamic Load Normal [lb]	59
Static Load Maximum [lb]	61
Static Load Normal [lb]	43