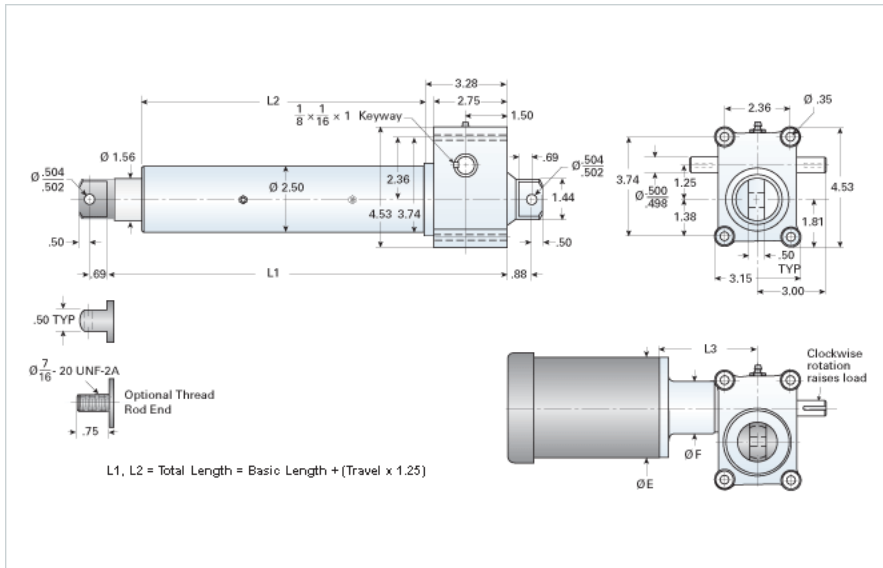


DD-105-HD/05XX

Call 800-321-7800 or visit us online at www.nookindustries.com to configure and order your DD-105-HD/05XX today!



Performance Specifications

Travel Rate [in/min]	69
Dynamic Capacity [lb]	1900
Rated Life [in]	190000
Motor Horse Power [hp]	0.5
Maximum Rod Reaction Torque [in-lb]	67
Std. Brake Torque [ft-lb]	3
Approximate Stopping Distance No Load [in]	0.05
Approximate Stopping Distance Full Load [in]	0.06

Details

Gear Ratio	5:1
Input Turns Per Inch Of Travel	25
Torque To Raise 1 lb. [in-lb]	0.0095
Max Capacity [lb]	2000
Max HP [hp]	0.5

Weight

Basic Weight [lb]	19
Per Inch of Travel [lb]	0.77

Tube Dimensions

L1 Basic Length [in]	10.75
L2 Basic Length [in]	6.38

NEMA 42 Dimensions

L3 [in]	4.48
E [in]	4.63
F [in]	2.63

NEMA 48 Dimensions

L3 [in]	4.48
E [in]	4.63
F [in]	3.12

NEMA 56C Dimensions

L3 [in]	5.71
E [in]	6.63
F [in]	3.75

NEMA 182TC Dimensions

L3 [in]	-
E [in]	-
F [in]	-

NEMA 184TC Dimensions

L3 [in]	-
E [in]	-
F [in]	-

NEMA 213TC Dimensions

L3 [in]	-
E [in]	-
F [in]	-