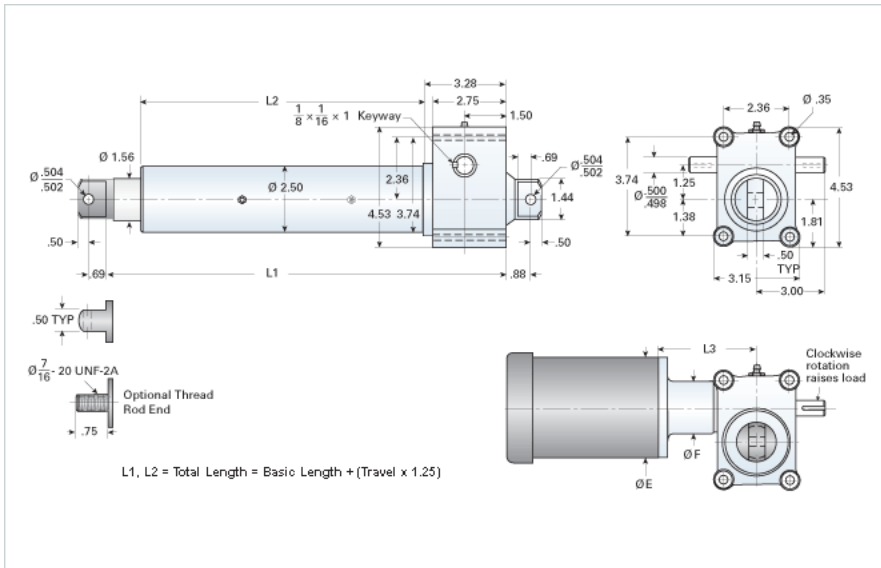


DD-1020-A5/02XX

Call 800-321-7800 or visit us online at www.nookindustries.com to configure and order your DD-1020-A5/02XX today!



Performance Specifications

Travel Rate [in/min]	17
Dynamic Capacity [lb]	900
Motor Horse Power (ref.) [hp]	0.25
Std. Brake Torque [ft-lb]	3
Approximate Stopping Distance No Load [in]	0.02
Maximum Rod Reaction Torque [in-lb]	84

Details

Gear Ratio	20:1
Input Turns Per Inch Of Travel	100
Torque To Raise 1 lb. [in-lb]	0.0125
Max Capacity [lb]	2000
Max HP [hp]	0.25

Weight

Basic Weight [lb]	15
Per Inch of Travel [lb]	0.76

Tube Dimensions

L1 Basic Length [in]	8.25
L2 Basic Length [in]	4.25

NEMA 42 Dimensions

L3 [in]	4.48
E [in]	4.63
F [in]	2.69

NEMA 48 Dimensions

L3 [in]	4.48
E [in]	4.63
F [in]	3.12

NEMA 56C Dimensions

L3 [in]	5.71
E [in]	6.63
F [in]	3.75

NEMA 182TC Dimensions

L3 [in]	-
E [in]	-
F [in]	-

NEMA 184TC Dimensions

L3 [in]	-
E [in]	-
F [in]	-

NEMA 213TC Dimensions

L3 [in]	-
E [in]	-
F [in]	-